

# MILWAUKEE ELECTRONICS NEWS

Q1 2025

## About Milwaukee Electronics

Milwaukee Electronics designs and manufactures custom circuit board assemblies for the medical, transportation, military, logistics and a variety of other industries.

The Company operates over 180,000 square feet of manufacturing in Portland, Oregon; Milwaukee, Wisconsin; and Tecate, Mexico. In addition to EMS and product design and engineering services, it offers quick-turn prototyping and on-demand assembly through its Screaming Circuits business unit.

## Nick Bernacki Named Regional Sales Manager

Nick Bernacki has joined the EMS sales team as the Regional Sales Manager for the Western States territory. Based in Los Angeles, Nick brings more than 20 years of experience in building



*Nick Bernacki*

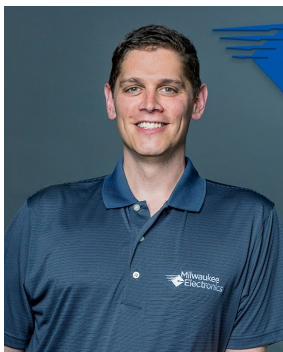
and growing electronics contract manufacturing companies.

Throughout his career, Nick has made remarkable contributions to both family-owned businesses like Corlund Electronics, Ventura Electronics, and Qual Pro Corp., as well as global giants like Sanmina. He has driven revenue growth by more than 4X and successfully led companies into new, lucrative markets such as medical and military-aerospace segments. His proven ability to excel in high-reliability, mission-

*(Continued on page 2)*

## Cautiously Optimistic on the Road Ahead

As I write this, tariffs are our number one customer concern because they represent added cost. The challenge in addressing tariff impact is that the tariff landscape is



*Jered Stoehr*

continuing to rapidly change. That said, our team is working to mitigate tariff impact. At the supply chain level, we are working with our distributors to minimize tariffs wherever possible. In cases where a supplier change may mitigate tariff impact, we are recommending that change to impacted customers. Our team in Tecate, Mexico analyzes best export options for tariff mitigation as

well. Our program managers are working with customers on a case-by-case basis to discuss tariff impact and these options. In short, while we can't entirely eliminate the added costs tariffs represent to every company building electronic products, we are doing our best to mitigate costs where possible.

On a more positive note, our President, Mukesh Dulani, and our senior leadership have been hard at work implementing continuous improvement activities throughout the company designed to improve quoting cycle time, factory throughput and forecast accuracy. Our inventory levels are down from previous allocation highs and on-time delivery is up. Quality levels continue to align with best in class in our industry. The impact of the changes we have made should be starting to be seen in most programs and we are com-

mitted to continuing to improve. We've also added new customers and are ramping those programs. We are making equipment investments aligned with customer needs. For example, we've just added a flying probe tester to our Canby facility to help customers preferring a fixtureless test option.

Internally, our theme for this year is: **Focus on the Fundamentals. Operational Excellence.** As in football, we recognize that doing small things right every time is the best way to build a winning team. While there are limits on how much we can mitigate tariff impact, our team is committed to driving improvement at levels that help improve the value we deliver to every customer.

**Jered Stoehr**  
CEO

## Bernacki

*(Continued from page 1)*  
critical markets is a testament to his expertise and dedication.

Known for his results-driven approach,

Nick is passionate about fostering long-lasting client relationships, exceeding sales goals, and building collaborative team environments. His commitment

to customer trust and satisfaction has been a cornerstone of his success in bringing products to fruition.

## Flying Probe Tester Operational in Portland

The SPEA 4060 flying probe tester has been installed in Milwaukee Electronics' Portland, OR facility and initial use over three customers' programs has begun. This advanced system is designed to provide comprehensive PCBA verification for prototyping, NPI and complex electronics. It offers faster test cycles, improved accuracy, and expanded functional test capabilities compared to traditional flying probe testers.

This fixtureless tester can perform multiple types of testing including:

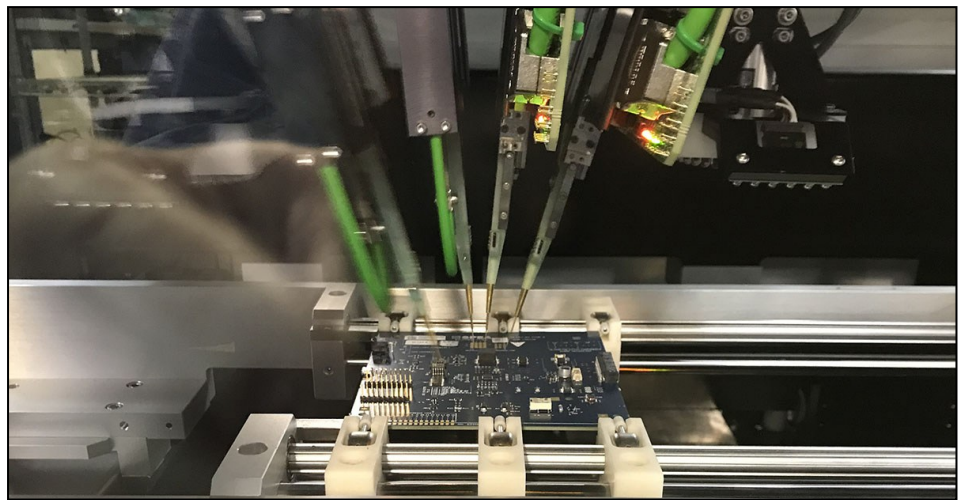
- **Electrical Tests** – Measures resistance, capacitance, inductance, diode functionality and continuity/shorts detection
- **Powered Testing** – Performs functional power-on tests, verifying voltage levels, signals and circuit functionality
- **Boundary Scan (JTAG) Testing** – Enables testing of digital ICs without physical test access, improving test coverage for BGA and fine-pitch components.

As a result, it is capable of detecting open circuits, short circuits, misaligned components and signal integrity issues. It also supports in-system programming (ISP) of microcontrollers, FPGAs and flash memory, streamlining production.

“We’ve invested in this capability to better support our customers’ requirements. We will be integrating it into more customer programs over 2025. We



*Above, the SPEA 4060 flying probe tester provides a comprehensive fixtureless test solution. Below, a PCBA under test.*



are also evaluating adding an additional unit to our Milwaukee facility later this

year, said Justin Moulton, VP Operations & Technology.

## Screaming Circuits to Exhibit at PCB East April 30th

Screaming Circuits will be exhibiting at PCB East in Boxborough, MA on April 30th in Booth #207. The team is sponsoring the show bag in conjunction with marketing partner ASC Sunstone (Booth #205).

“We want to emphasize the total prototype manufacturing solution that Screaming Circuits and ASC Sunstone can provide,” said Kellie Schwab, VP Product & Marketing, Screaming Circuits and Milwaukee Electronics.

Screaming Circuits is also a Printed Circuit Electronics Association (PCEA) silver member.

“The conference that PCEA puts on during the show attracts a lot of engineering professionals. We feel it is important to support this type of valuable educational and networking event,” added Kellie.

Learn more about the show or register at [www.pcbeast.com](http://www.pcbeast.com). Screaming Circuits will also be exhibiting at PCB West and NEDME in the fall. Screaming Circuits is a Gold NEDME sponsor.



*Screaming Circuits and ASC Sunstone Circuits are sponsoring the PCB East show bag to emphasize the total prototype manufacturing solution they can provide.*

---

### Newsletter Contact

Paul Forker, Vice President of Business Development

Email: [pforker@milwaukeeelectronics.com](mailto:pforker@milwaukeeelectronics.com)

[www.milwaukeeelectronics.com](http://www.milwaukeeelectronics.com)

Sales inquiries: [sales@milwaukeeelectronics.com](mailto:sales@milwaukeeelectronics.com)

Copyright © 2025 Milwaukee Electronics

All Rights Reserved

5855 N. Glen Park Road  
Milwaukee, WI 53209  
Tel: 877.960.2134